

# Product Guide

## 4-in-1 Puzzle (Pet)



### **MELISSA AND DOUG SCOOP**

Children can imagine having a whole host of pets with this 4-in-1 peg puzzle! Color-coded pegs and matching pictures underneath each piece make it easy and lots of fun for children to place the bird, goldfish, cat, and dog into the sturdy wooden puzzle board, which is also imprinted with the name of each animal for spelling and word-skill practice. Includes 16 pieces in all.

### **AREAS OF TREATMENT**

,Cognitive (Animal / Sound Recognition, Problem-Solving, Matching), Fine Motor, Eye-Hand Coordination

### **ADAPTATIONS**

#### **Visual Deficits:**

Prop puzzle within visual field using foam tablet holder (available for purchase on website)

#### **Decreased Motor Skills:**

Provide hand over hand assistance if applicable.

Offer support (arm under elbow with open palm) for limited bilateral upper extremity range of motion. Encourage use of fingers or knuckle to manipulate puzzle pieces. Offer physical assist to place puzzle pieces in board.

#### **Sensory Overload:**

Cover half of the puzzle to decrease visual overstimulation. Limit number of puzzle pieces given.

### **Activity Ideas**

- Hide puzzle pieces in noodle or rice bins
- Pair puzzle with animal sound clips or sound blocks (available for purchase)



# Product Guide

## Big Button Number Fun



### **MELISSA AND DOUG SCOOP**

One, two, buttons for you! Packed into this kid-friendly activity set is the most colorful and fun way to practice number and shape recognition, counting and sequencing. Five double-sided wooden boards with ten whimsical designs provide insets for 10 number cards. Everyone will have fun matching the correct number cards and shapes for each board!

### **AREAS OF TREATMENT**

Cognitive (matching, number recognition, color identification, shape recognition, decision making, and character recognition), Fine Motor

### **ADAPTATIONS**

#### **Decreased Motor Skills:**

Place cards within individuals reach. Provide hand over hand assistance if applicable. Offer support (arm under the elbow with the open palm) for those with limited bilateral upper extremity range of motion. Offer physical assist to place puzzle pieces in board.

#### **Visual Deficits:**

Place card within visual field or use foam table holder (available for purchase on website) to prop items within visual field

#### **Activity Ideas**

- Offer two board options and prompt to make choice
  - Hide buttons in noodle or rice bins
- Prompt to identify number on board, color of buttons and character on board



# Product Guide

## Bead Sequencing Set



### **MELISSA AND DOUG SCOOP**

Stack the brightly colored beads on five hardwood dowels to match the pattern cards! Includes more than 45 brightly colored wooden beads and 5 double-sided wooden pattern cards. A sturdy wooden storage box contains all the pieces and holds the dowels upright for playtime. The 10 patterns increase in difficulty to build matching, sequencing, and fine motor skills.

### **AREAS OF TREATMENT**

Cognition (Color / Shape Recognition, Sequencing, Matching, Counting), Eye-Hand Coordination, Fine Motor

### **ADAPTATIONS**

#### **Decreased Motor Skills:**

Provide hand over hand assistance if applicable.  
Offer support (arm under elbow using open palm) for those with limited bilateral upper range of motion.  
Vary distance between sticks for those with poor fine motor control.

#### **Decreased Cognition:**

Reduce the number of beads / Sequencing boards.  
Omit sequencing cards.

### **ACTIVITY IDEAS**

- Hide beads in sensory bin (sand, noodle, rice, etc.).
  - Sort beads according to color/shape



# Product Guide

## Cut, Sculpt and Roll Clay Play Set



### **MELISSA AND DOUG SCOOP**

Let the good times roll! Featuring 8 exciting tools and 4 vibrant colors of modeling dough, this set invites children to cut different shapes with zigzag and straight scissors, sculpt circles and triangles with pattern wheels, and mold adorable figures by turning over the covered tubs and pressing. Encourage creativity as well as color and pattern recognition with Cut, Sculpt & Roll!

### **AREAS OF TREATMENT**

Cognitive (Color / Shape Recognition), Fine Motor, Proprioceptive (Pushing), Sensory (Tactile)

### **ADAPTATIONS**

#### **Visual Deficit:**

Offer support (arm under elbow using open palm) for those with limited bilateral upper range of motion in conjunction with a cookie sheet to position items within client's visual field.

#### **Decreased Motor Skills:**

Provide hand over hand assistance if applicable.

Add foam gripper to handle to increase fine motor control / improve grip.

### **ACTIVITY IDEAS**

- To stimulate the olfactory senses, add 1-2 drops of essential oils to playdough.
  - Lemon / Peppermint = Awakening
  - Lavender / Rose = Calming
- Identify colors and shapes of playdough



# Product Guide

## Turn and Tell Wooden Clock



### **MELISSA AND DOUG SCOOP**

Perfect for kids who are ready to learn to tell time, this learning clock features hands that rotate with a gentle click, marking off the minutes as they go. The detailed clock face has large red numbers to match the hour hand, small blue numbers to match the minute hand, and a segmented color disk to help kids visualize "quarter past" and "half past." Also included are 13 double-sided time cards for practice: Place one in the holder at the top of the clock, then match the numeric or analog time shown by moving the clock hands to their proper position. Slide open the "digital clock" window to check the answer! Then place the cards back in the storage slot at the back of the clock for neat and tidy storage.

### **AREAS OF TREATMENT**

Cognitive (Number Recognition, Matching), Fine Motor,

### **ADAPTATIONS**

**Visual Deficits:**  
Enlarge face cards.

### **ACTIVITY IDEAS**

- Create daily schedule (meals, activities of daily living) and have child turn clock hands to match time/activity.



# Product Guide

## Bowling Friends Preschool Playset



### **MELISSA AND DOUG SCOOP**

This preschool-friendly bowling set has soft plastic components that are easy to lift, easy to maneuver, and so much fun to knock down! Six unique character pins feature bright colors, raised textures, and sweet facial expressions to encourage little bowlers. Set them up indoors and out--young children will have a blast finding new ways to knock them down! With bright colors, textures, and adorable facial expressions, these endearing toys are sure to strike big at playtime.

### **AREAS OF TREATMENT**

Cognitive (Color Recognition, Animal ID, Auditory Processing of Animal Sounds), Gross Motor, Hand-Eye Coordination, Spatial Awareness

### **ADAPTATIONS**

#### **Decreased Hand Eye Coordination and / or Attention**

Create make shift alley by place masking tape from the starting point to the pins. Model rolling the ball towards pins. Prompt client to emulate action.

Use on table for clients who have difficulty standing or playing on the floor

### **ACTIVITY IDEAS**

- Use textured or weighted ball
- Mark lanes on floor or table with bright masking tape or pool noodles cut in half.



# Product Guide

## Fish and Count Learning Game



### **MELISSA AND DOUG SCOOP**

Fill the pond with "fish," hold the squeezable rod, and reel in fun and learning with every cast! The "game" in Fish & Count Game is simple: Just lower the self-stick bait into the fishing pond, let it attach to one of the felted pieces, and lift out your catch. But the detail-packed printed fabrics and colorful, shaped pieces also offer unlimited opportunities for counting, sorting, matching, color identification, size comparisons, storytelling, and all kinds of imaginative play. This engaging preschool play set is truly adaptable for any age, letting kids draw from the information-rich illustrations on the reversible pool to help structure their own games and learning activities.

### **AREAS OF TREATMENT**

Cognitive (Color / Number Recognition, Matching, Sorting), Fine Motor, Hand-Eye Coordination

### **ADAPTATIONS**

#### **Decreased Motor Skills:**

- Use a sport band to attach the pole to the client's hand.
- Use foam or pool noodle to make larger for grasp

### **ACTIVITY IDEAS**

- Present two objects of differing color. Prompt client to identify specified color.
  - Use dry pool or bucket to pretend fish



# Product Guide

## Color by Dots Art Activity



### MELISSA AND DOUG SCOOP

Follow the simple color key to complete animal-filled illustrations! Color by Dots is an entertaining way to practice color-recognition and fine motor skills in a charming art activity. As the pictures become more complex, your child will become more encouraged and engaged with every masterpiece!

### AREAS OF TREATMENT

Attention to task, Cognitive (Color Recognition, Matching, Animal ID, Auditory Discrimination of Animal Sounds), Direction Following, Fine Motor,

### ADAPTATIONS

#### **Decreased Motor Skills:**

Build up paintbrush or use Jumbo Paint Brush (available for purchase on website).

#### **Visual Deficits:**

Prop up on an easel and place within visual field (available for purchase on website).

### ACTIVITY IDEAS

- Use scented crayons or markers
- Identify animals, colors and objects in the pictures





# Product Guide

## Sound Blocks



### **MELISSA AND DOUG SCOOP**

Animals "sound off" when the two wooden cubes are properly placed in the wooden tray! Find the halves that match and listen to six realistic farm animal sounds.

### **AREAS OF TREATMENT**

Cognitive (Animal ID, Auditory Discrimination), Fine Motor, Visual

### **ADAPTATIONS:**

#### **Decreased Motor Skills:**

Provide one half of the puzzle. Give instruction to push the other half towards its match. Provide hand over hand assistance as needed.

#### **Visual Deficits/Sensory:**

Use matching Velcro shapes attached to each animal pair to help with matching appropriate animal.

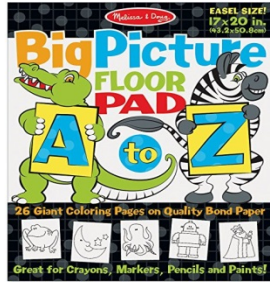
### **ACTIVITY IDEAS**

- Pair with farm puzzle (available for purchase on website) and match puzzle pieces to animal sounds



# Product Guide

## Big Picture Floor Pad A to Z



### MELISSA AND DOUG SCOOP

Huge coloring pages are perfectly sized to hang on a Standing Art Easel, share across the arts-and-crafts table, or spread out on the floor. Especially good for children working on fine motor skills and developing pencil grasp, the large pages are an open invitation to lean in or lie down and color—a painless way to encourage proper arm and finger positioning. The oversize pictures offer lots of big spaces to fill, so there's less pressure to mind the margins and more opportunity to color freely, boosting confidence in children who might be reluctant crayon-users.

### AREAS OF TREATMENT

Cognitive (Letter / Object Recognition), Creative Expression, Fine Motor,

### ADAPTATIONS

#### **Visual Deficits:**

Place Pad on an Easel (available for purchase). Outline images with colors.  
Outline with puffy paint to create a border to paint within

#### **Decreased Motor Skills:**

Use Jumbo crayons or add foam around crayons to allow for easier grasp.

### ACTIVITY IDEAS:

- Use with finger paint, Dot Markers (Bingo markers), or scented crayons/markers



# Product Guide

## Classic Play Money Set



### **MELISSA AND DOUG SCOOP**

Never be short of (pretend) cash again! With fifty of each denomination, this set includes familiar looking paper bills and plastic coins. This stash of cash conveniently stores in a handy wooden "cash drawer" box. Each compartment has the denomination printed inside for easy matching cleanup.

### **AREAS OF TREATMENT**

Cognitive (Matching, Sorting, Money Skills), Fine Motor

### **ADAPTATIONS**

#### **Decreased Cognitive Ability:**

Reduce the number of coins / paper money.  
Provide a visual prop of money matching board

### **ACTIVITY IDEAS**

- Provide pictures of commonly purchased items with the cost of the item listed. Prompt individual to locate the correct dollar / change to purchase the item.
- Roll two dice. Add up the total. Instruct individual to locate the correct amount of change to match the number represented by the dice.
  - Pair with Diner Play Set (available for purchase on the website) for creative play
  - Make a matching game with laminated cards (ex. Match dollar bill to \$1.00 card)



# Product Guide

## Chunky Puzzle (Alphabet)



### **MELISSA AND DOUG SCOOP**

Alphabet fun begins with this extra thick wooden puzzle that includes 26 easy-grasp, chunky pieces (A-Z). Each piece is shown with a colorful picture that begins with that letter, and a full-color, matching letter is shown under each piece. Letter pieces stand up.

### **AREAS OF TREATMENT**

Cognitive (Color Recognition, Letter Recognition, Phonics), Fine Motor, Hand-Eye

### **ADAPTATIONS**

#### **Visual Deficits:**

Prop puzzle up (within visual field) on Foam Tablet Holder (available for purchase).

#### **Decreased Motor Skills:**

Instruct individual to use a finger to pull the puzzle pieces out. Provide physical assistance when placing them back in.

### **ACTIVITY IDEAS**

- Spell out name or simple words with letter pieces
- Seek and search for letters in rice, noodle or bean bin
- Match letter pieces with coordinating flash cards



# Product Guide

## Chunky Puzzle (Number)



### **MELISSA AND DOUG SCOOP**

Counting fun begins with this extra thick wooden puzzle that includes 20 easy-grasp, chunky pieces (1-20). A full-color, matching number appears under each piece, and counting pictures equal to each numbered piece are shown on the puzzle board. Number pieces stand up.

### **AREAS OF TREATMENT**

Cognitive (Color Recognition, Number Recognition, Object Identification), Fine Motor, Hand-Eye

### **ADAPTATIONS**

#### **Visual Deficits:**

Prop puzzle up (within visual field) on Foam Tablet Holder (available for purchase on website).

#### **Decreased Motor Skills:**

Instruct individual to use a finger to pull the puzzle pieces out. Provide physical assistance when placing them back in.

### **ACTIVITY IDEAS**

- Provide objects for counting. Instruct individual to make piles representing number on puzzle piece.
  - Match puzzle pieces with coordinating number flash cards
  - Do simple math activities



# Product Guide

## Large Farm Jumbo Knob Puzzle



### **MELISSA AND DOUG SCOOP**

Seven favorite farm animals and a farmer stand out against the big red barn. This extra-thick wooden puzzle includes eight pieces, with jumbo wooden knobs that are easy for children to grasp. Full-color matching pictures appear underneath each piece to help with matching.

### **AREAS OF TREATMENT**

Cognitive (Animal Identification / Auditory Processing Using Animal Sounds, Matching), Coordination, Eye-Hand, Fine Motor, Visual Perception

### **ADAPTATIONS**

#### **Decreased Motor Skills:**

Offer support (arm under elbow with open palm) for limited bilateral upper extremity range of motion. Use finger to pull out. Provided hand over hand assist as needed to place back in slot.

### **ACTIVITY IDEAS**

- Sing “Old MacDonald Has a Farm” use puzzle pieces to identify next verse in song
  - Model animal sounds, prompt individual to repeat sound.
  - Pair with sound blocks (available for purchase on the website)



# Product Guide

## Large Shape Jumbo Knob Puzzle



### **MELISSA AND DOUG SCOOP**

Eight familiar shapes are brightly colored with bold outlines. Extra thick wooden puzzle includes eight pieces, with jumbo wooden knobs for easy grasping. Full-color, matching pictures appear underneath each piece.

### **AREAS OF TREATMENT**

Cognitive (Shape / Color Recognition), Eye-Hand Coordination, Fine Motor, Visual Perception,

### **ADAPTATIONS**

#### **Decreased Motor Skills:**

Offer support (arm under elbow with open palm) for limited bilateral upper extremity range of motion.  
Use finger to pull out. Provide hand over hand assist as needed.

#### **Visual Deficits-**

Prop puzzle up on foam tablet holder and place within visual field (available for purchase on website)

#### **Sensory Overload-**

Cover slots not being used. Give one puzzle piece at a time.

### **ACTIVITY IDEAS**

- Seek and hide pieces in a noodle, rice, sand or bean bin
- Pair shapes with coordinating objects cards (ex: triangle with pizza, rectangle with door, square with window, etc.)



# Product Guide

## See and Spell Learning Tool



### **MELISSA AND DOUG SCOOP**

Complete a puzzle to spell a word! This handsome wooden puzzle set helps children gain familiarity with the letters of the alphabet and their sounds as kids develop a sight-reading vocabulary. The letters are also wonderful for stenciling and lots of learning games. More than 60 colorful wooden letters fit into the eight two-sided cutout boards to spell three- and four-letter words. All this spelling and fine motor fun fits into one compact wooden storage case!

### **AREAS OF TREATMENT**

Cognitive (Object / Color / Letter Recognition / Phonics), Hand-Eye Coordination, Fine Motor

### **ADAPTATIONS**

#### **Decreased Motor Skills:**

Offer support (arm under elbow with open palm) for limited bilateral upper extremity range of motion. Use hand over hand assist to place letters in slots.

Provide a board of similar shape and size. Place above puzzle. Slide letter down into corresponding area.

#### **Visual Deficits:**

Prop puzzle up on Foam Tablet Holder and place within visual field (available for purchase on the website)

### **ACTIVITY IDEAS**

- Pair words with sentences such as: We find fish in ... A bird flies in the sky...etc.
  - Hide letter in noodle or rice bins
  - Identify letter, picture and colors





# Product Guide

## Shape Sequence Sorting Set



### **MELISSA AND DOUG SCOOP**

Recognizing color, shape and size, and sorting objects into groups are the "building blocks" of beginning math skills. What better way to explore these important concepts than with boldly colored wooden blocks and frame! Extension activities are included to explore form, fun and function all in one toy!

### **AREAS OF TREATMENT**

Cognitive (Sequencing, Sorting, Color / Shape / Size Recognition), Eye-Hand Coordination, Fine Motor

### **ADAPTATIONS**

#### **Decreased Motor Skills:**

Offer support (arm under elbow with open palm) for limited bilateral upper extremity range of motion. Use finger to pull out. Provide hand over hand assist as needed to place objects in correct space

#### **Sensory Overload:**

Complete one column at a time. Limit the number of pieces presented. Provide pieces of similar shape and color.

#### **Visual Deficits:**

Prop board up using Foam Tablet Holder (available for purchase on website).

### **ACTIVITY IDEAS**

- Seek and find pieces in a noodle, rice, bean or sand bin
- Pair with pictures that have similar shapes (pizza, house, moon, etc.) and have child match the block to the picture



# Product Guide

## Slice and Sort Wooden Egg



### MELISSA AND DOUG SCOOP

This is a truly eggcellent addition to any play kitchen! Children can match the six different yolk colors--red, orange, yellow, green, blue, and purple--then use the wooden knife to slice the eggs apart and mix them up or play memory games.

### AREAS OF TREATMENT

Cognitive (Matching, Color Recognition, Visual Discrimination), Fine Motor

### ADAPTATIONS

#### **Decreased Motor Skills:**

Build up handle with clay or putty to improve grip.  
Stabilize egg for cutting by placing it in an egg carton (inlet is to flimsy)

### ACTIVITY IDEAS

- Memory Match Game: Place halves of eggs face down on a flat surface. Instruct individual to turn over two halves at one time. Attempt to locate halves that match.
  - Talk about units of measure (i.e.: two halves make a whole, ½ dozen, dozen)
    - Use colored felt circles and match color inside egg.



# Product Guide

## Taffy Sea Turtles Catch and Hatch Pool Toy



### **MELISSA AND DOUG SCOOP**

Each plastic egg in this sweet pool-play set fits one baby turtle inside. Toss them in the pool, then gather them up to "hatch" an exciting variety of swimming, racing, sequencing and sorting games!

### **AREAS OF TREATMENT**

Cognitive (Matching, Color / Number Identification), Dexterity, Fine Motor, Sequencing

### **ACTIVITY IDEAS**

- Hide turtles / eggs in sand, rice, etc. Instruct client to sift through sensory medium to locate turtles / eggs
- Sequencing: Model a sequence using turtles (ex: red, blue, green.). Prompt individual to complete sequence
  - Find in number order
  - Matching/Memory Game



# Product Guide

## Take-Along Shape Sorter



### **MELISSA AND DOUG SCOOP**

More than a shape sorter--this is an on-the-go activity center! Using nine plastic shapes and the padded carrying case, children can lift crinkly flaps, identify the pictures, match the shapes, and drop the textured blocks through the sorter . . . then pull the plush dog around the edge to unzip the case and start it all again! The baby- and toddler-friendly games and learning activities are great for enjoying together or for independent play, and are sure to keep little ones giggling while they learn. The easy-to-grasp padded handle makes it easy to carry the whole set from place to place--even for crawlers, scooters, and emerging walkers.

### **AREAS OF TREATMENT**

Cognitive (Color, Shape, Object Recognition, Matching), Fine Motor / Dexterity

### **ADAPTATIONS**

#### **Decreased Motor Skills:**

Offer support (arm under elbow with open palm) for limited bilateral upper extremity range of motion. Use finger to lift flaps.

#### **Sensory Overload:**

Minimize the number of pieces. Cover slots (with duct tape or hand) for the individual to discover the hole in which the object fits.

### **ACTIVITY IDEAS**

- Group shape blocks together by color or shape, count each pile.
  - Match the shape color to a picture on the carrier.



# Product Guide:

## Stamp and Sort Mailbox



### **MELISSA AND DOUG SCOOP**

Enjoy the thrill of receiving personal mail every day with this wooden mailbox activity set. With six letters and six removable stamps, it's fun to sort the mail into the mailbox, then open the door with the wooden key for a special delivery.

### **AREAS OF TREATMENT**

Cognitive (Matching, Sorting, Color Recognition, Size Differentiation), Creative Expression (Imaginative Play), Fine Motor, Hand Eye Coordination,

### **ADAPTATIONS**

#### **Decreased Motor Skills**

Hand over hand assist as needed,

#### **Visual Deficits:**

Use Visual Table Pop (available for purchase on website) and place within visual field for placement of stickers on post cards.

### **ACTIVITY IDEAS**

- Velcro coordinating textures to post cards and stamps for a fun sensory matching game
- Pair with Classic Mailbox (available for purchase on the website) for interactive and social play



# Product Guide

## Learn to Play Xylophone



### MELISSA AND DOUG SCOOP

More than an instrument, this first xylophone set is a child's best introduction to music! Mallet in hand, children can explore a simple octave as they become familiar with simple musical concepts through hands-on play. Those ready for the next step need only open the integrated storage drawer to reveal five double-sided song cards, featuring color-coded notations on a real musical staff. Place one in the music holder above the keys, and kids and parents alike will be amazed at how simple it is to play 10 favorite children's songs.

### AREAS OF TREATMENT

Cognitive (Color Recognition, Rhythmic Patterning, Direction Following), Hand Eye Coordination, Sensory (Auditory)

### ADAPTATIONS

#### **Visual Deficits**

Provide enlarged music sheets.

Place Stickers (bold, larger print) on keys

#### **Decreased Motor Skills:**

Build up handle with foam or pool noodle

Use Sports Band to help secure handle to hands

Color tips of sticks for correct hand placement

### ACTIVITY IDEAS

- Play Copy Cat with having the person repeat the musical pattern
  - Encourage creativity by encouraging own composition.



# Product Guide

## Wooden Stamp Set (Happy Handles)



### **MELISSA AND DOUG SCOOP**

With a special handle to keep your little one's fingers far from the six-color inkpad and six different stamps to choose from, stamping fun will be endless! The handy case keeps the stamps and pad organized!

Washable, kid-friendly ink

### **AREAS OF TREATMENT**

Cognitive (Color Recognition / Image Identification, Patterning, Matching), Fine Motor, Hand Eye Coordination, Proprioceptive

### **ADAPTATIONS**

#### **Decrease Motor Skills:**

Build up handles using clay or putty.  
Provide hand over hand as needed

#### **Sensory Overload:**

Reduce the number of stamps / colors of ink.

### **ACTIVITY IDEAS**

- Add scented oils on ink or use pre-scented ink pads to increase sensory experience
  - Stamp on Play-doh
- Pair with Jumbo Ink Pad (available for purchase on the website).



# Product Guide

## Stacking Blocks



### **MELISSA AND DOUG SCOOP**

Nest the blocks, build a tower, and take shape-sorting fun to new heights! These multifunctional blocks have something new to explore on every side: a family of faces, drop-through tops, shape-sorter sides, and a school of sea creatures offer lots to discuss as children build vocabulary, hand-eye coordination, and motor skills. The sturdy plastic materials and contoured rims on this stacking toy make it easier for little ones to place each block, building confidence along with coordination and balance. Creative cutouts in the cups and lid and a collection of shape pieces add to the fun, letting kids create their own shape-sorting activity--or build a tower and drop the shapes all the way through! A felt flap in the base provides sensory reinforcement as children reach in to retrieve the pieces, encouraging little hands to keep exploring, discovering, and learning with this exciting baby and toddler toy

### **AREAS OF TREATMENT**

Cognitive (Color / Shape Recognition, Matching), Gross / Fine Motor, Sensory (tactile)

### **ACTIVITY IDEAS**

- Scarf Pull: Place multiple, brightly colored scarves into the box. Have the client reach through the flaps and grasp a scarf. Have them pull the scarf out of the box.
- Touch and Feel Activity: Place items (ex: cotton balls, squish balls, figurines) in box. Have child place hands through the flaps. Have child touch, feel, describe and guess item.





# Product Guide

## Fill and Spill Picnic Basket



### **MELISSA AND DOUG SCOOP**

Here's everything you'd see at a picnic (except the ants!). Remove and replace the four colorful picnic treats from a flip-top picnic basket. This soft play set features a wedge of watermelon, a bottled fruit drink, a take-apart sandwich and an ice-cream cone. Constructed of high-quality fabrics and plastic, this durable set will provide hours of pretend picnic fun!

### **AREAS OF TREATMENT**

Fine motor, Instructional Play (ex: "Make a sandwich with tomatoes and cheese"), Imaginative Play, Sensory (Auditory / Tactile)

### **ACTIVITY IDEAS**

- Use with food placemat (available for purchase on the website)
  - Match picnic items to pictures in books or magazines
- Place items around the room and have person gather them (Can use scooter board for vestibular and proprioceptive input)



# Product Guide

## Spin-A-Slice



### **MELISSA AND DOUG SCOOP**

Race to make your pizza first in this matching game with a "tasty" twist! Players get a wooden pizza crust and an order card, and take turns spinning for pizza slices. With each spin, you get to steal a slice, lose a slice, grab a free topping--or flop your whole pizza pie. Fill your crust to win! Includes 2 wooden pizza crusts, 22 pizza order cards, 48 pizza slices, spinner, and detailed instructions for multiple game-play options.

### **AREAS OF TREATMENT**

Cognitive, Direction Following, Fine Motor

### **ADAPTATIONS**

#### **Visual Deficit:**

Use Table Foam (available for purchase on the website) visual prop and place within visual field

#### **Decreased Motor Skills:**

Place double sided velcro on pieces and board to allow for easier placement

### **ACTIVITY IDEAS**

- Remove cards and Spinner. Give directions to make \_\_\_pizza. Direct them to locate the correct ingredients
  - Use for simple fractions (how many pieces to make a whole, half, etc.)



# Product Guide

## Pizza Party



### **MELISSA AND DOUG SCOOP:**

Young pizza chefs will shout "Mamma mia!" when they see the 54 toppings that come with this wooden pizza set! Then they'll get busy topping, cutting, and serving up six custom slices for their happy customers. The set comes with a brightly colored tray, pizza cutter, spatula, and a wooden box for storage, and the pizza makes "slicing" noises when cut!

### **AREAS OF TREATMENT**

Cognitive (Shape recognition), Direction Following, Fine Motor, Hand-Eye Coordination

### **ADAPTATIONS**

#### **Decreased Motor Skills:**

Provide hand and over hand assist as needed with sorting and matching

### **ACTIVITY IDEAS**

- Pair with Meal Placemat or Dinner Set (available for purchase on website) for imaginative and social play
  - Create menu for pizza options



# Product Guide

## Fill and Spill: Pretty Purse



### **MELISSA AND DOUG SCOOP**

Everything necessary for kids on the go fits into this pretty purse! This soft play set includes a cell phone that chimes, a key ring with keys, a change purse with coins, and a compact with a child-safe mirror. Everything is easily removed and replaced into a charming pink purse with a purple handle. Constructed of high-quality fabrics and plastic, this durable set will provide hours of pretend play fun!

### **AREAS OF TREATMENT**

Cognitive (Counting), Fine Motor, Sensory (Tactile, Auditory), make-believe play

### **ACTIVITY IDEAS**

- Memory recall: Have the person look at one to two items in the purse then remove to see if they can recall items
- Place items around the room and have person gather them (Can use scooter board for vestibular and proprioceptive input)



# Product Guide

## 2-in-1 Talking Ball



### **MELISSA AND DOUG SCOOP**

Toss it back and forth to hear this amazing ball say the ABCs or count to 10! Just flip a switch to select the mode you prefer, then turn the reversible fabric panels to highlight counting quantities, alphabet artwork, and bright colors and patterns. Designed to delight kids of any age, the pleasantly noisy ball is perfect for indoor tossing, catching, kicking, and rolling, helping babies, toddlers, and preschoolers develop gross motor skills as they play. The layered graphics also offer lots of detail to engage children's minds as they grow, gently introducing more advanced concepts such as odd and even numbers or vowels and consonants in a graphical way, and inviting exploration and discovery at a child's own pace. It's a wonderful way to introduce early-learning concepts in a playful, physical way that's perfect for young children!

### **AREAS OF TREATMENT**

Cognitive (Colors / Letter / Number Identification, Object Recognition), Gross Motor, Hand Eye Coordination,

### **ADAPTATIONS**

#### **Decreased Motor Skills:**

Roll on ground using hand over hand assist as needed

### **ACTIVITY IDEAS**

- Have person name an object that begins with the letter one of their finger touches when they catch the ball
- Have person count out number of designated items that finger touches when they catch the ball



# Product Guide

## Stack and Sort Board



### **MELISSA AND DOUG SCOOP**

The 15 wooden pieces in this novel shape sorter offer a variety of colors, shapes, and opportunities for learning. Stack them on the pegged stand in order, mix up the shapes and colors, or create your own games with these engaging first manipulatives! A printed key on the wooden base offers guidance when it's wanted, but the possibilities for play are endless.

### **AREAS OF TREATMENT**

Cognitive (Colors / shaper recognition) fine motor skills, dexterity

### **ADAPTATIONS**

#### **Decreased Motor Skills:**

Provide hand over hand assistance as needed  
Limit the number of pieces provided.

### **ACTIVITY IDEAS**

- Print out large shapes to match pieces with
- Seek and find objects by placing pieces in a noodle, rice, sand or bean bin



# Product Guide

## Wooden Vehicles and Traffic Signs



### **MELISSA AND DOUG SCOOP**

Six wooden vehicles and nine familiar signs furnish a world of travel and pretend-play fun! Car-loving kids will find everything they need to set up a busy street or add to train sets and blocks: The set includes emergency vehicles, a school bus, a taxi, garbage truck and nine brightly painted traffic signs for imaginative play. The included play extensions suggest skill-building activities to improve vocabulary and sorting, too. All 15 pieces store neatly in the compartmentalized wooden box when playtime is over.

### **AREAS OF TREATMENT**

Cognitive (Categorizing, Directionality) Fine Motor, Hand Eye Coordination

### **ADAPTATIONS**

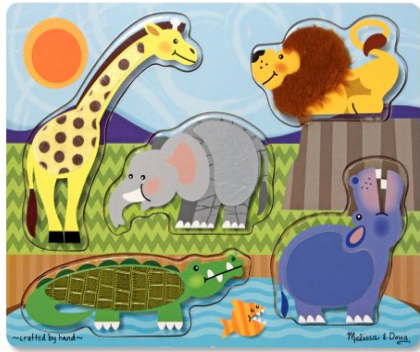
### **ACTIVITY IDEAS**

- Pair with Melissa and Doug Road Round the Town Road Rug and Car Set. “Drive” the cars around town and visit the different buildings.
  - Match Sign to printed paper signs for a matching game
    - While in the car look for sign along the way
  - Pair with audio clips, prompt to identify vehicle sound



# Product Guide:

## Zoo Animals Touch and Feel Puzzle



### MELISSA AND DOUG SCOOP

Five textured pieces make this wooden puzzle unique—but what will make it truly special is the name of your little “animal” right on the puzzle background! Specify “Leonardo”, “Christine”, “Zane & Ann”, or the personalization of your choice. We’ll have it custom-engraved and delivered to you in no time

### AREAS OF TREATMENT

Cognitive (Animal / Sound Recognition), Eye hand coordination, Fine Motor, Problem Solving, Sensory (Tactile)

### ADAPTATIONS

#### **Decreased Motor Skills:**

Offer support (arm under elbow with open palm) for limited bilateral upper extremity range of motion.  
Use finger to pull out. Provide hand over hand assist as needed.

#### **Visual Deficits-**

Prop puzzle up on foam tablet holder and place within visual field (available for purchase on website)

#### **Sensory Overload-**

Cover slots not being used. Give one puzzle piece at a time.

### ACTIVITY IDEAS

- Seek and find pieces in noodle, rice, sand or bean bin
  - Use sound clips to match with animals
- Make cards with matching textures that are similar to puzzle pieces and have the person match.





# Product Guide

## Wooden Latches Board



### **MELISSA AND DOUG SCOOP**

Undo a lock or latch, swing open the numbered door and count on finding fun when the picture beneath is revealed on this wooden play board and educational toy! Build fine motor skills while learning colors, numbers, animals and more!

### **AREAS OF TREATMENT**

Cognitive (Number, Color, Animal Recognition), Dexterity, Fine Motor

### **ADAPTATIONS**

#### **Decreased Motor Skills:**

Offer support (arm under elbow with open palm) for limited bilateral upper extremity range of motion.  
Use finger to open and close slots. Provide hand over hand assist as needed.

#### **Visual Deficits-**

Prop puzzle up on foam tablet holder and place within visual field (available for purchase on website)

### **ACTIVITY IDEAS**

- Have person find and point to a specific shape, color of animal. Ask questions for them to seek out object, color, or number (Ex: what house has a #3?)



# Product Guide

## Jolly Helpers Hand Puppets



### **MELISSA AND DOUG SCOOP**

This four-piece hand-puppet set makes it easy for children and caregivers to role-play together! Four simple glove puppets in a coordinated theme can act out a scene together, or be used separately for simple puppet play. Made with brightly patterned, washable fabrics and built to last, these soft and sweet hand puppets are sure to be go-to toys for years to come. Jolly Helpers Hand Puppets include a police officer, firefighter, construction worker and doctor.

### **AREAS OF TREATMENT**

Communication skills, developing motor skills, hand-eye coordination, self-confidence

### **ADAPTATIONS**

#### **Decreased Motor Skills:**

Place puppets on Rulers or dowels with foam casings to allow for a grasp hold.

### **ACTIVITY IDEAS**

- Provide Social Scripts (Act out different social scenarios)



# Product Guide

## Star Diner Restaurant Play Set



### **MELISSA AND DOUG SCOOP**

Order up! Everything kids need to serve up delicious diner classics is included in this 41-piece restaurant play set collection. Order on the reusable menu, cook with the durable plastic frying pan and spatula, and serve using a full place setting. Seven wooden food pieces have different food options on either side, and there are even double-sided milkshake and hot drink inserts. Servers and chefs can wear the apron and ring the bell when meals are ready, and customers can pay their bill (use the dry-erase marker on the guest check) with the included play money. Kids three and older hungry for imaginative play are sure to be satisfied!

### **AREAS OF TREATMENT**

Expressive Language, Pretend Play, Social Skills (selecting from / ordering off of menu, dining etiquette)

### **ADAPTATIONS**

#### **Visual Deficits:**

Enlarged menu

#### **Decreased Motor Skills:**

Build up handle with foam grips

### **ACTIVITY IDEAS**

- Pair with Pizza Party or Play Classic Money set (available for purchase on website) to increase social and imaginative play
  - Food and culinary tool identification, Match to pre-printed picture cards
- Items can be used with older individuals to help with kitchen safety and cooking lessons



# Product Guide

## Zingo



### THINK FUN SCOOP

What better way to build a child's reading and counting skills than with Zingo! 1-2-3, the newest matching game in the award-winning Zingo! product line. With Zingo! 1-2-3, players must match their numbered tiles to their corresponding challenge card. The first player with a full card wins the game by yelling "Zingo!" Two levels of play focus on counting and addition. Zingo! 1-2-3 builds early number sense skills in young players as they associate digits with images and text and supports early math learning through counting and pattern recognition. This fast-paced matching game will have the whole family yelling "1-2-3 PLAY!"

### AREAS OF TREATMENT

Cognitive (Attention Span, Number / Word Recognition), Fine Motor, Hand Eye Coordination, social skills, turn taking

### ADAPTATIONS

#### **Visual Deficits:**

Prop board up using Foam Tablet (available for purchase on the website) and place within the client's visual field. Enlarge cards.

#### **Decreased Motor Skills:**

Use double sided adhesives/Velcro to place tiles onto card.

### ACTIVITY IDEAS

- Seek and find number chips in boodle, rice, sand or bean bin
- Make different playing cards based on season with corresponding numbers/pictures



# Product Guide

## Camo Chameleon Bag Toss



### **MELISSA AND DOUG SCOOP**

Help Camo Chameleon catch flies and bugs! The double-sided bean bag toss game for one or two players can sit horizontally or stand tall to provide several challenging ways to play. Eight numbered and color-coded bean bags featuring "delicious" insects for Camo to "eat" come with the colorful target to help kids four and older develop hand-eye coordination, number recognition and counting skills. Durably constructed for use either indoors or outside, the non-wobbling metal base is covered with strong polyester fabric. The whole thing folds flat for easy storage.

### **AREAS OF TREATMENT**

Cognitive (Number Recognition / Counting), Gross Motor, Hand Eye Coordination,

### **ADAPTATIONS**

#### **Decreased Motor Skills:**

Place on table or flat raised surface. Use soft or hollow plastic balls instead of bean bags.

### **ACTIVITY IDEAS**

- Number the holes to have person try to get in numerical order
  - Use point system to have client try to get high score
- Use various weighted bean bags or ball to make throwing easier or harder
  - Place sensory items in the hole and have child remove



# Product Guide

## Band in a Box



### **MELISSA AND DOUG SCOOP**

Band in a Box musical instrument set has everything preschoolers need to form a kids' marching band, launch a solo career, or just enjoy exploring music and sounds! The set includes a tambourine, cymbals, maracas, clacker, tone blocks, and a triangle, plus a sturdy wooden storage crate. Strike up the band and spark a lifelong love of music with this unique wooden set of hand-crafted wooden instruments.

### **AREAS OF TREATMENT**

Fine Motor, Hand Eye Coordination, Sensory (Auditory)

### **ADAPTATIONS**

#### **Decreased Motor Skills:**

If fine motor skills are diminished, a sport band can be used to attach the instrument to the client's hand. Offer support (arm under elbow with open palm) for limited bilateral upper extremity range of motion. Use finger to open and close slots. Provide hand over hand assist as needed. Build up handles with clay/putty or foam.

### **ACTIVITY IDEAS**

- Have person mimic rhythm using another instrument
  - Use a metronome to follow along with the beat
- Instrument identification, match to pre-printed photos, or sound clips.

